

ONLY TWO SUITES  
REMAINING



# LAKE SIDE 300

Comprehensively refurbished Grade A three-storey office building in an outstanding position on Norwich's pre-eminent business park.

**3,183 sq ft / 295.7 sq m  
and 6,523 sq ft / 606 sq m**  
TO LET with parking



[Lakeside300.co.uk](http://Lakeside300.co.uk)





Extensive refurbishment and a contemporary new design have created prestigious state-of-the-art office accommodation in a superlative landscaped environment.

**Broadland Business Park**

The Park's location, immediately adjacent to the A47 and A1270 Broadland Northway on the eastern side of Norwich, gives it excellent access to the region's transport network. It sits in a natural landscaped environment with mature trees and an attractive lake as its centrepiece, together with well maintained planting and vistas throughout the Park.

[Lakeside300.co.uk](http://Lakeside300.co.uk)





## Lakeside 300

The specification of Lakeside 300 is of an extremely high standard, making it one of the most sought-after office facilities in Norwich.

- Three storey building
- Environmentally efficient design
- VRF cooling and heating system
- LED lighting throughout
- Fully accessible raised floors
- 2.7 metre floor to ceiling height
- Suspended ceilings with recessed light fittings
- 17 metre wide open-plan floor plates
- Purpose-made double-glazed aluminium windows
- EPC rating – A
- Excellent natural lighting
- Stunning double height shared entrance foyer.

## Facilities

- Lift to all floors
- Toilets on each floor
- Male and female shower on each floor with dedicated changing area. DDA compliant shower room on the first floor.

## Parking

- First floor suite: 21 car parking spaces, including 1 disabled parking space
- Ground floor suite: 10 car parking spaces, including 1 disabled parking space
- Bicycle and motorcycle parking
- 21kW electric car charging points.



## FLOOR AREAS AND PLANS

Following recent lettings to Barratt David Wilson Homes, Mott MacDonald, NatWest and Optima Health, two remaining suites are available to let.

The **First Floor South** suite comprises approximately 6,523 sq ft / 606 sq m. 21 car parking spaces are included.

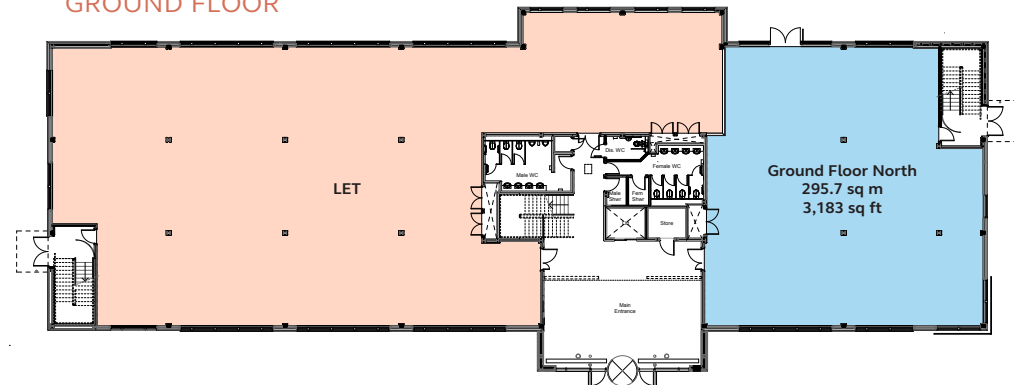
The **Ground Floor North** suite is approximately 3,183 sq ft / 295.7 sq m, with 10 car parking spaces.

The total remaining available space in Lakeside 300 is approximately 9,706 sq ft / 901.7 sq m.

### FIRST FLOOR



### GROUND FLOOR



# Location

Broadland Business Park's location to the east of Norwich city centre makes it readily accessible.

## Road

The Park is adjacent to the junction of the A47 and A1270 dual carriageways, with fast links to the area's major trunk routes. Sat nav NR7 0WG.

## Cycle

Cycleways linked to the expanding Norwich cycle network and local residential areas run throughout the Park.

## Walking

The Park has numerous footpaths linking it to local facilities, the surrounding countryside and residential areas.

## Bus

Regular bus services run past the Park, with some services stopping some 100 metres from Lakeside 300.

## Rail

Norwich railway station, with its links to London, the Midlands, north of England and local destinations, is easily accessible by car, bus and taxi from the Park.



## Air

Norwich Airport is around 15 minutes' drive from the Park

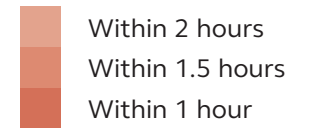
## On-site facilities

- Mature landscaped setting
- Lakeside walks
- Foot and cycle paths
- Waterside café with inside and outside seating overlooking the lake
- Beryl bikes and e-scooters
- Costa Drive-thru coffee shop
- Brewers Fayre bar and restaurant
- Fieldfare pub and restaurant
- Premier Inn hotel

## Amenities close by

- Bannatyne's Health Club
- Two Busy Bees nurseries
- Sainsbury's supermarket in walking distance
- Lidl Supermarket
- McDonald's

Lakeside300.co.uk





“Undoubtedly, one of Broadland Business Park’s key advantages is its unrivalled access”

**Local amenities**

- 1 Busy Bees Nurseries
- 2 Costa Coffee
- 3 The Fieldfare (Greene King pub)
- 4 Premier Inn
- 5 Waterside Café
- 6 Bannatyne’s Health Club
- 7 Memorial Gardens

**Development Opportunities**

- 9 Bankside 200

**Office Buildings**

- 10 Lakeside 200
- 11 Lakeside 300
- 12 Lakeside 400
- 13 Lakeside 500
- 14 Bankside 300
- 15 Bankside 100
- 16 Reed House
- 17 Willow House

- 18 The Horizon Centre
- 19 Evander
- 20 DSA

**Distribution Centres**

- 21 GAP Group
- 22 Delta Fire
- 23 Norwich Instrument Services

- 24 Gardners Books
- 25 Yodel
- 26 BT
- 27 DX
- 28 D&F McCarthy
- 29 Makro
- 30 Menzies
- 31 Start-rite

Broadland Business Park is ideally situated for easy access to the region’s transport infrastructure.

The Park is located on the east side of Norwich, adjacent to the A47 southern bypass and the A1270 Broadland Northway. The A47 provides direct links to the port of Great Yarmouth and to the Midlands, as well as to London and the south, via the A11 and M11.

The A1270 Broadland Northway links the Park directly to Norwich Airport, an easily accessible gateway for regular flights to UK and European destinations with worldwide connections via Amsterdam Schiphol.

Norwich railway station is about 15 minutes away and provides regular services to London Liverpool Street, Cambridge, Peterborough, for the East Coast Main Line, the Midlands and North West. The city centre is less than three miles away.



# NORWICH'S PREMIER BUSINESS LOCATION



**Will Jones**  
07899 061892  
william.jones@bidwells.co.uk

**Chris Squirrell**  
07887 830124  
chris.squirrell@bidwells.co.uk

**James Allen**  
07778 297298  
jamesa@rochecs.co.uk

**Graham Jones**  
07496 164609  
grahamj@rochecs.co.uk

**[broadlandbusinesspark.co.uk](http://broadlandbusinesspark.co.uk)**

