

HAINSWORTH  
2 bedroom home

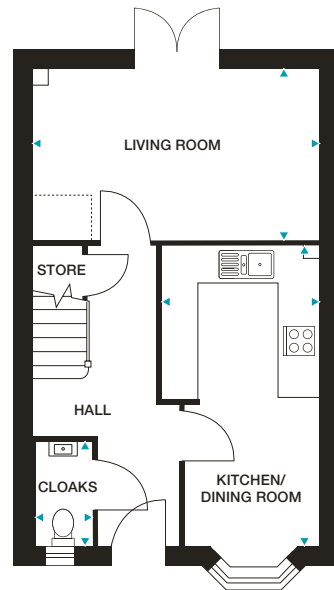


CGIs are indicative only and elevations are subject to change, external finishes and features may vary.

# HAINSWORTH

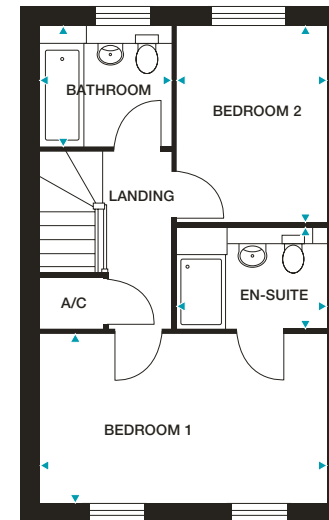
## 2 bedroom home

Plots 19 20, 41, 42, 45, 46, 57 and 58



GROUND FLOOR

**Kitchen/Dining Room** 2750mm x 4700mm (max) 8'5" x 15'6" (max)  
**Living Room** 4680mm x 2820mm (max) 15'4" x 9'3" (max)  
**Cloaks** 1700mm x 960mm (max) 5'7" x 3'2" (max)



FIRST FLOOR

**Bedroom 1** 4680mm x 2790mm (max) 15'4" x 9'2" (max)  
**En-Suite** 2480mm x 1620mm (max) 8'2" x 5'4" (max)  
**Bedroom 2** 3230mm x 2480mm 10'7" x 8'2"  
**Bathroom** 2100mm x 1970mm (max) 6'11" x 6'6" (max)

Dimensions stated are within 50mm (2") but should not be used as a basis for furnishings, furniture or appliance spaces etc. Dimensions for such purposes must be verified against actual site measurements. Please note the handing of plots may vary from the floor plans shown. Please check individual plot details with our sales team.