

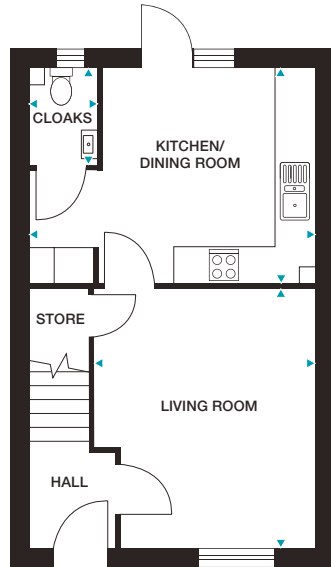
HENBURY  
2 bedroom home



# HENBURY

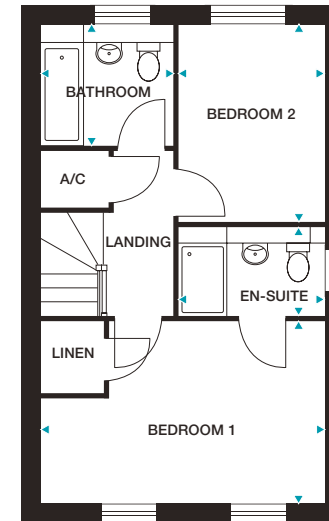
## 2 bedroom home

Plots 73, 74, 75, 98, 99 and 100



GROUND FLOOR

**Kitchen/Dining Room** 3530mm x 3490mm (max) 11'8" x 11'6" (max)  
**Living Room** 4150mm x 3630mm (max) 13'7" x 11'11" (max)  
**Cloaks** 1560mm x 1090mm (max) 5'1" x 3'7" (max)



FIRST FLOOR

**Bedroom 1** 4680mm x 2950mm (max) 15'4" x 11'11" (max)  
**En-Suite** 2440mm x 1470mm (max) 8'0" x 4'10" (max)  
**Bedroom 2** 3220mm x 2420mm 10'7" x 8'0"  
**Bathroom** 2480mm x 2160mm (max) 8'2" x 7'0" (max)

**Please note: Plots 74, 75, 98 and 99 are handed. En-suite window to plots 73, 75, 98 and 100 only.**

Dimensions stated are within 50mm (2") but should not be used as a basis for furnishings, furniture or appliance spaces etc. Dimensions for such purposes must be verified against actual site measurements. Please note the handing of plots may vary from the floor plans shown. Please check individual plot details with our sales team.

**LOVELL  
HOMES**