

FAIRFIELDS

ASHLEY

NEWMARKET

A development by Highland Fairhaven LLP

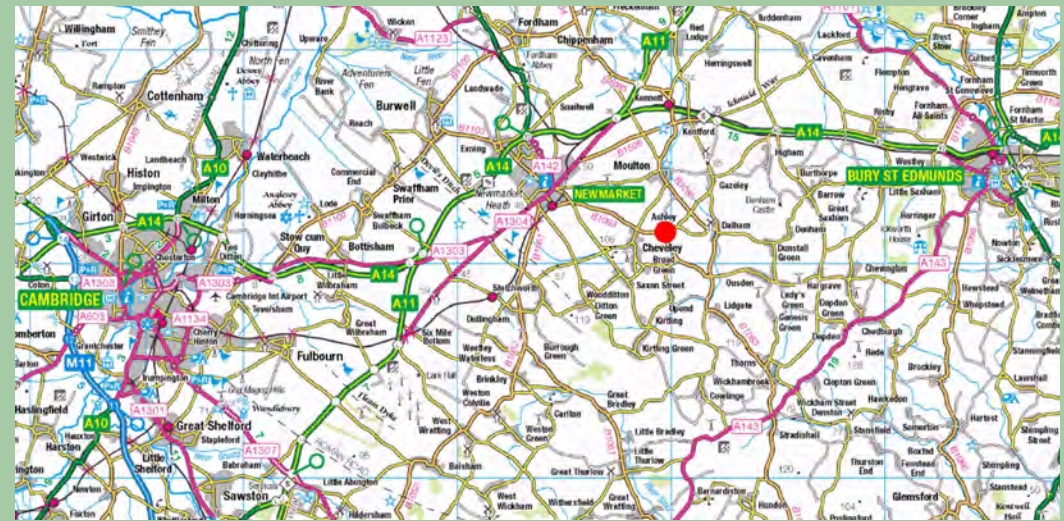
The Fairfields development is located to the north of Church Street and occupies a location on the edge of the village of Ashley, near Newmarket.

Ashley is located between Newmarket (4 miles), Bury St Edmunds (12 miles) and East of Cambridge (17 miles).

The village itself has a long history with an entry in The Domesday Book of 1086. Ashley is a small village in a pleasant setting adjacent to the Suffolk boundary and has close ties to Newmarket. It has a clearly defined centre associated with a pond and the point where the road from Newmarket reached the top of the chalk ridge. The older core of attractive flint buildings is covered by a conservation area.

Facilities in the village include a post office, church, public hall, public house, restaurant and sports field. The village has a regular bus service which runs to Newmarket.

The site formed part of the Fairhaven Trust Estate based at Kirtling Towers nearby and is being developed by a partnership between the Fairhaven Trust and Highland Property Ltd.





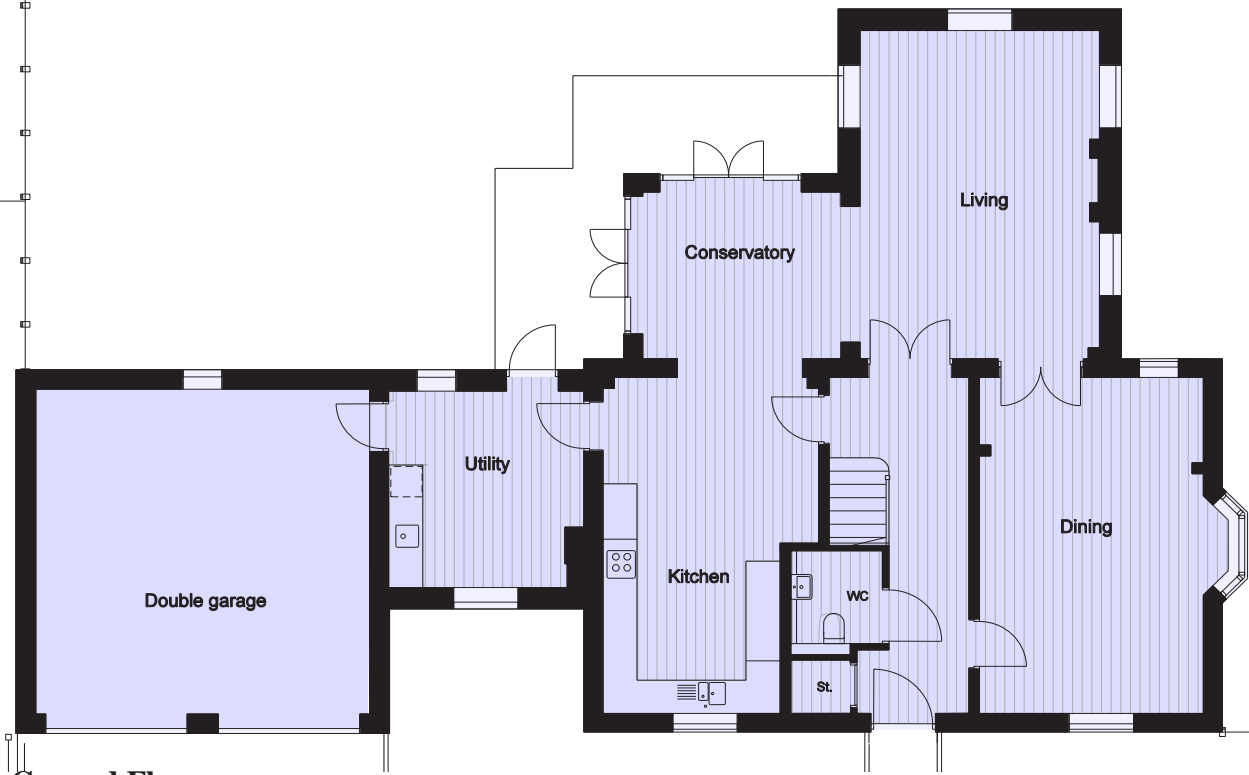
SITE PLAN







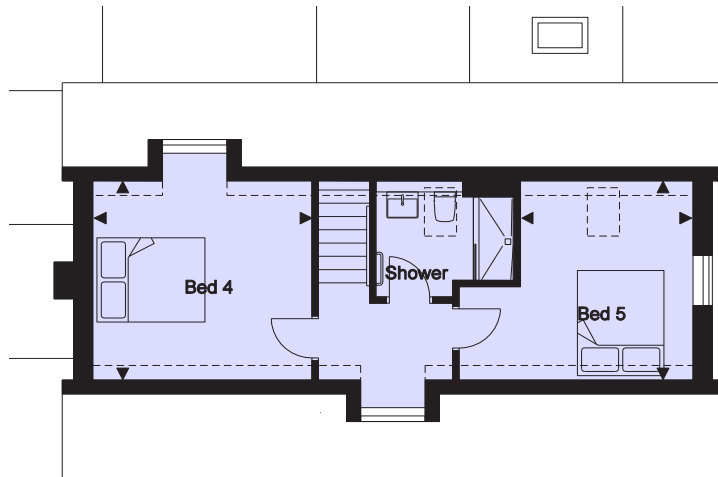
NO 16



Ground Floor



First floor



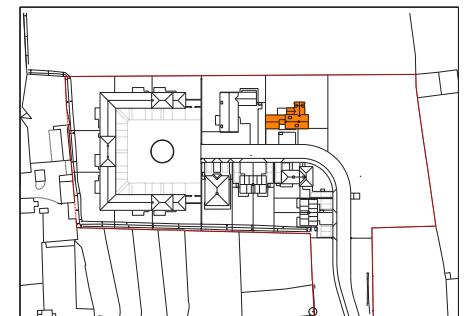
Second Floor



Area: 245.6 sqm 2,644 sqft (excluding garage)
(Including 8.2sq.m 88 sq.ft under 1.5m)

Room dimensions

Living Room	6.93x4.21	19'5"x13'10"
Dining Room	6.00x3.93	19'11"x12'10"
Conservatory	3.72x3.26	12'2"x10'8"
Kitchen	6.07x3.79	19'11"x12'5"
Utility	3.54x3.35	11'7"x11'0"
Bed 1	3.97x3.88	13'0"x12'9"
Bed 2	4.21x3.49	13' 10"x12'2"
Bed 3	4.13x3.72	13'7"x11'10"
Bed 4	3.88x3.60	12'9"x11'10"
Bed 5	4.13x3.60	13'7"x11'10"
Garage	5.87x5.82	19'3"x19'1"



NO 15



Ground Floor

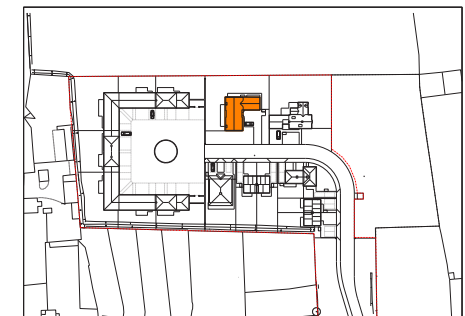
Area: 255.5 sqm 2,748 sqft (excluding car port)

Room dimensions

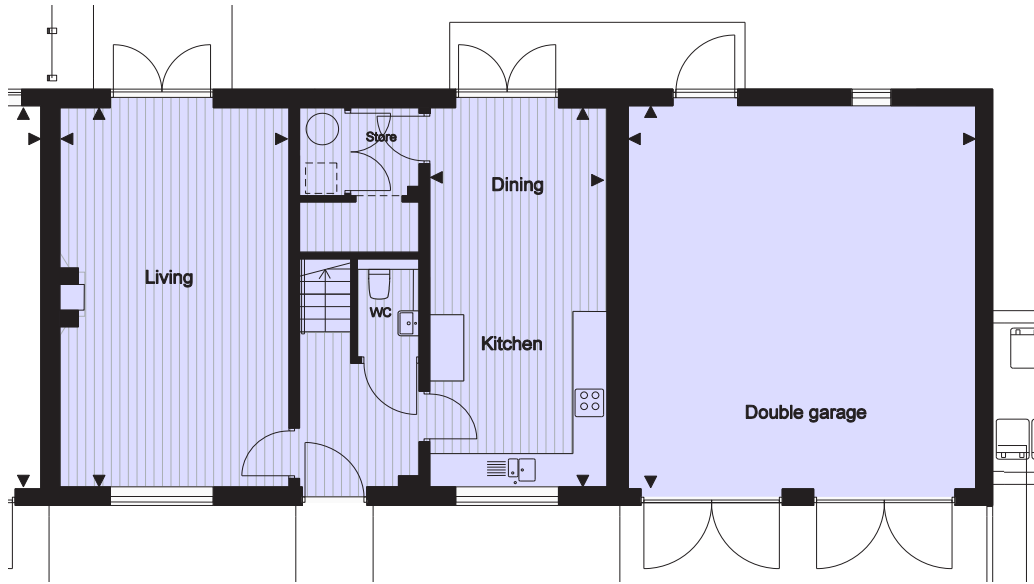
Living Room	7.41x3.71	24' 4"x12' 2"
Dining/Kitchen	7.41x6.53	22' 4"x21' 5"
Home office	4.48x2.70	14' 86"x8' 10"
Utility	5.505x2.53	18' 3"x8' 4"
Utility platform	3.54x2.6	11' 7"x8' 6"
Bed 1	5.31x3.59	17' 5"x11' 9"
Dressing	2.00x1.43	6' 7"x4' 8"
Bed 2	4.98x3.37	16' 4"x11' 1"
Bed 3	4.68x3.81	15' 4"x12' 6"
Bed 4	3.95x2.90	12' 12"x9' 6"
Car port	5.69x5.63	18' 8"x18' 6"



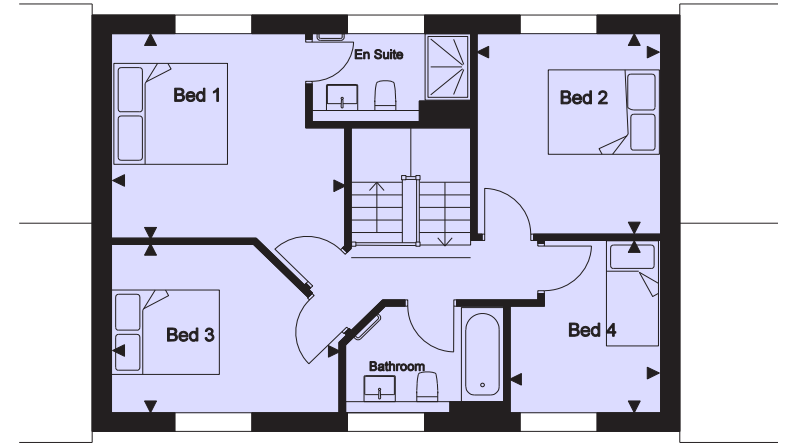
First Floor



NO 14



Ground Floor



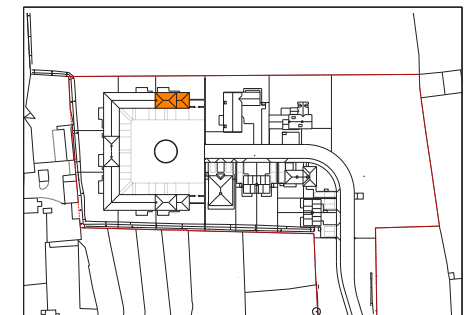
First floor



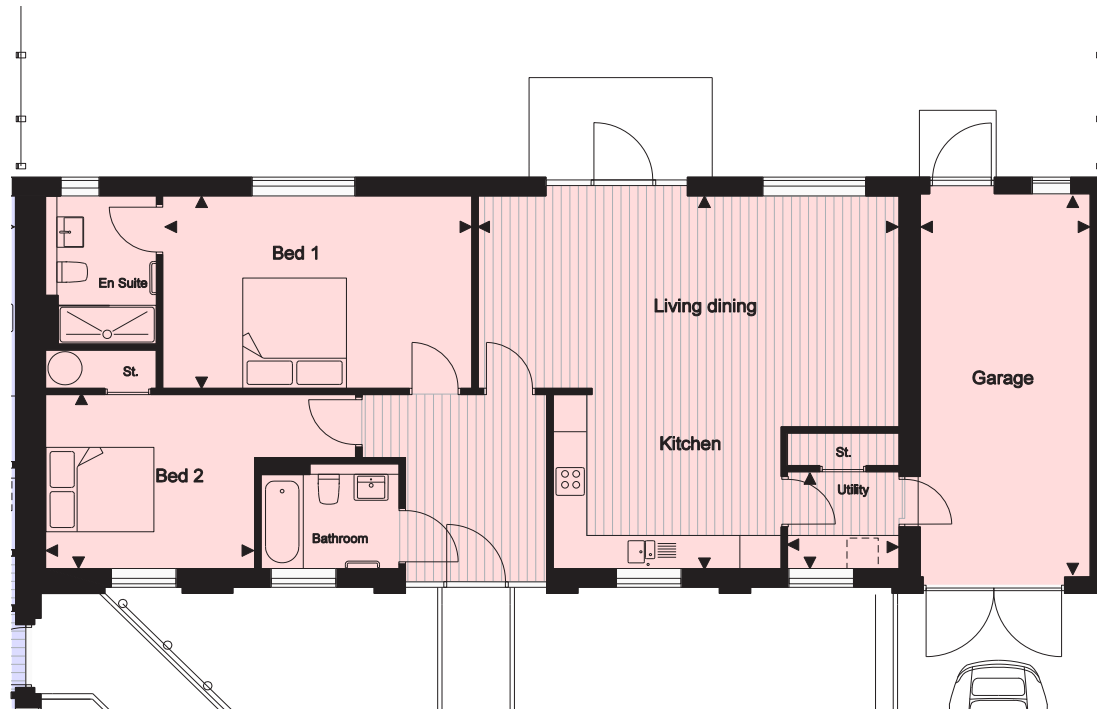
Area: 130.2 sqm 1,401 sqft (excluding garage)

Room dimensions

Living Room	6.74x4.11	22' 1"x13' 6"
Dining/Kitchen	6.74x3.15	22' 1"x10' 4"
Bed 1	4.11x3.59	13' 6"x11' 9"
Bed 2	3.54x3.24	11' 7"x10' 8"
Bed 3	4.02x3.04	13' 2"x10' 0"
Bed 4	3.09x2.66	10' 2"x8' 9"
Garage	6.92x6.12	22' 8"x20' 1"



NO 13

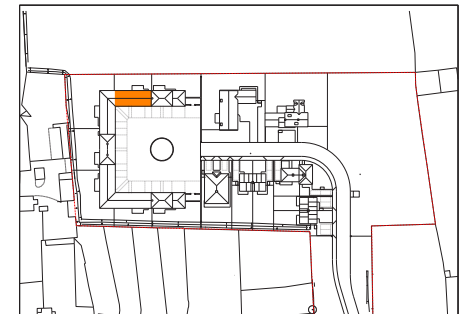


Area: 101.9`sqm 1,097 sqft (excluding garage)

Room dimensions

Living/Dining/

Kitchen	7.41x6,73	24' 4"x22' 1"
Utility	1.92x1.71	6' 4"x5' 7"
Bed 1	5.73x3.52	18' 10"x11' 7"
Bed 2	3.96x3.15	12' 1"x10' 4"
Garage	6.92x3.05	22' 4"x10' 0"



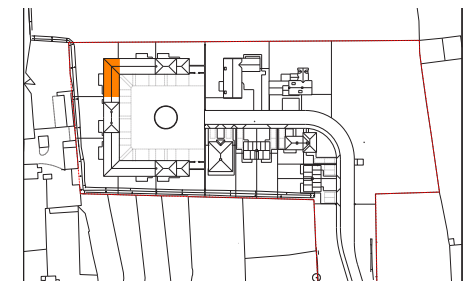
NO 12

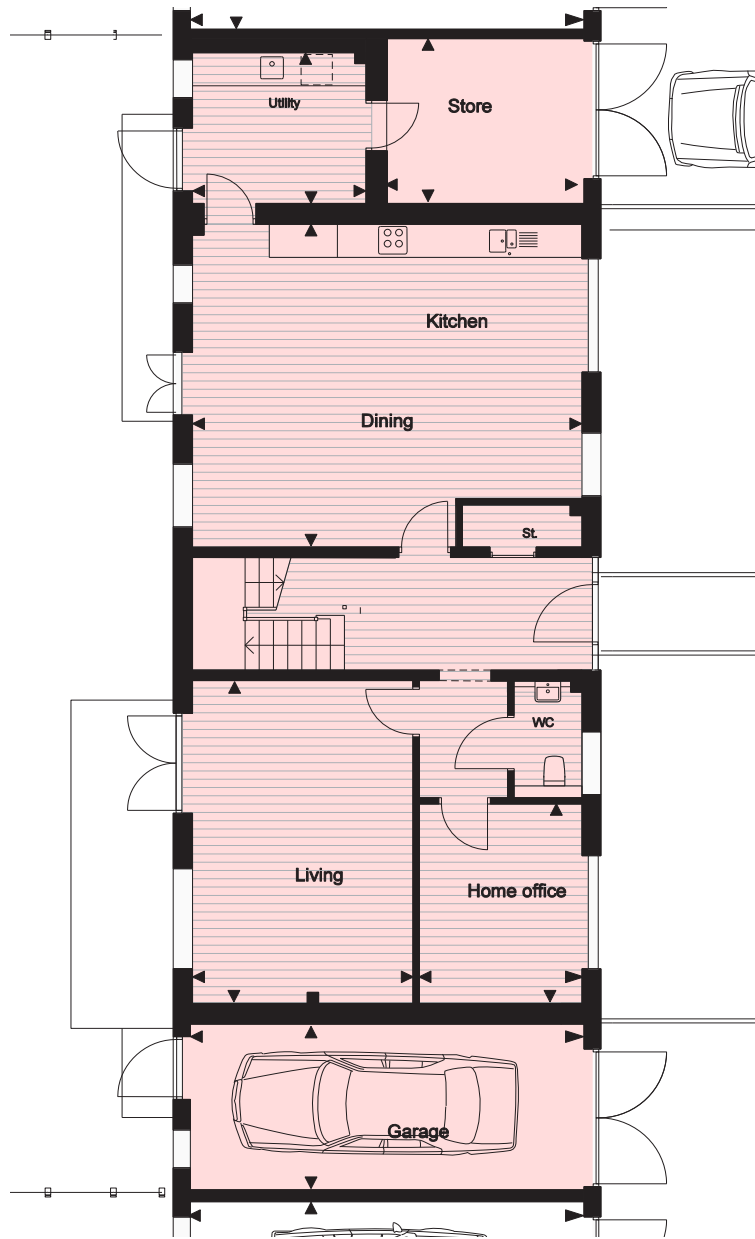


Area: 103.5sqm 1,114 sqft (excluding garage)

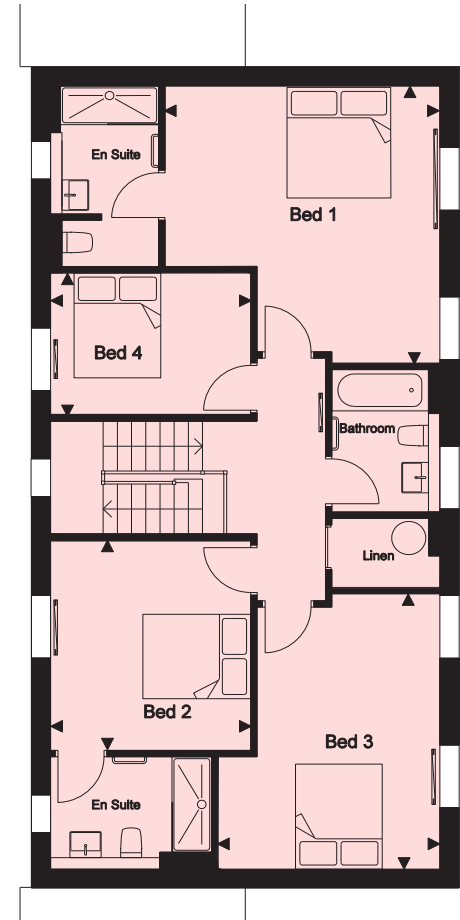
Room dimensions

Room	Dimensions (m)	Dimensions (ft)
Living/ Dining/Kitchen	7.60x6.73	24' 11" x 22' 1"
Utility	1.88x1.50	6' 2" x 4' 11"
Bed 1	5.41x3.52	17' 9" x 11' 7"
Bed 2	3.84x3.53	12' 7" x 11' 7"
Garage	6.81x3.01	22' 4" x 9' 11"





Ground Floor

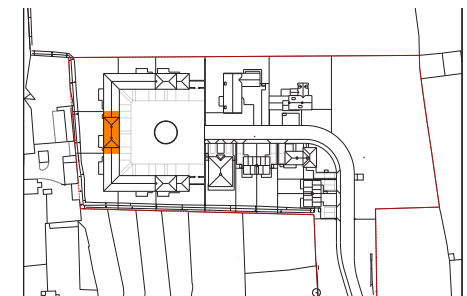


First floor

Area: 200.4 sqm 2,157 sqft (excluding garage and store)

Room dimensions

Dining/Kitchen	6.63x5.83	21' 9" x 19' 2"
Living Room	5.83x3.83	19' 2" x 12' 7"
Home office	3.59x2.7	11' 9" x 8' 10"
Utility	3.00x2.7	9' 10" x 8' 10"
Store	3.00x2.73	9' 10" x 8' 11"
Bed 1	4.97x4.63	16' 4" x 15' 2"
Bed 2	3.84x3.38	12' 7" x 11' 1"
Bed 3	4.92x3.85	16' 2" x 12' 8"
Bed 4	3.38x2.53	11' 1" x 8' 4"
Garage	6.63x2.97	21' 9" x 9' 9"



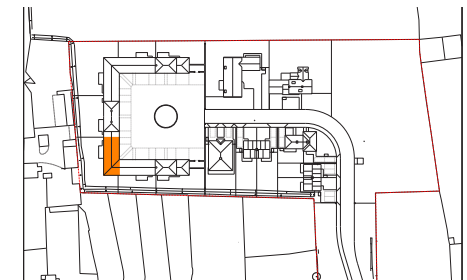
NO 10



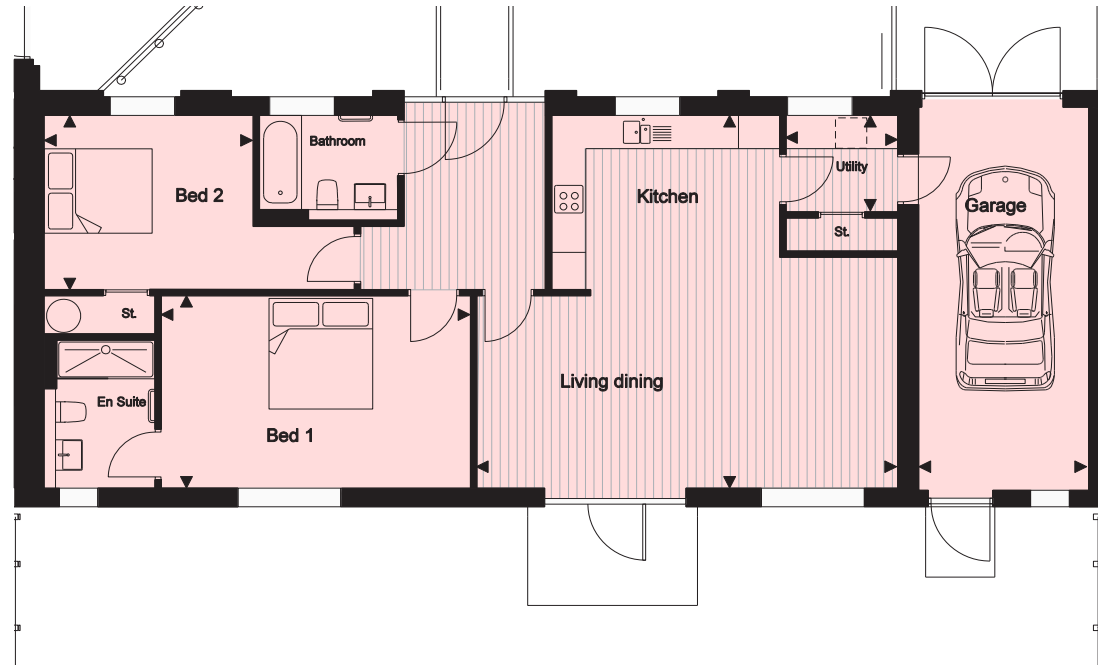
Area: 102.9sqm 1,108 sqft (excluding a garage)

Room dimensions

Living/ Dining/Kitchen	7.82x6.66	25'8"x21'9"
Utility	1.83x1.80	6'0"x5'11"
Bed 1	5.17x3.43	17'0"x11'3"
Bed 2	4.27x4.70	14'0"x15'5"
Garage	6.63x3.01	21'9"x9'11"



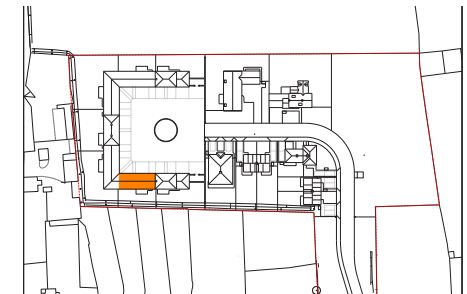
NO 9

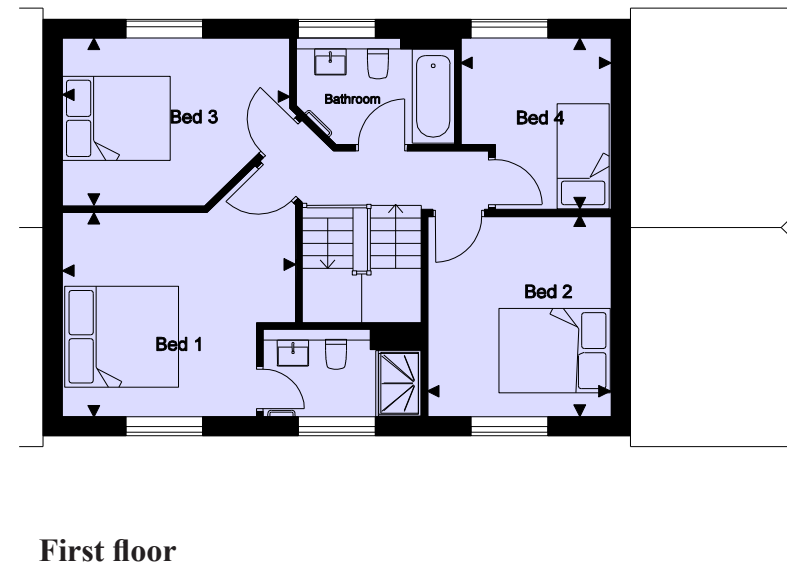
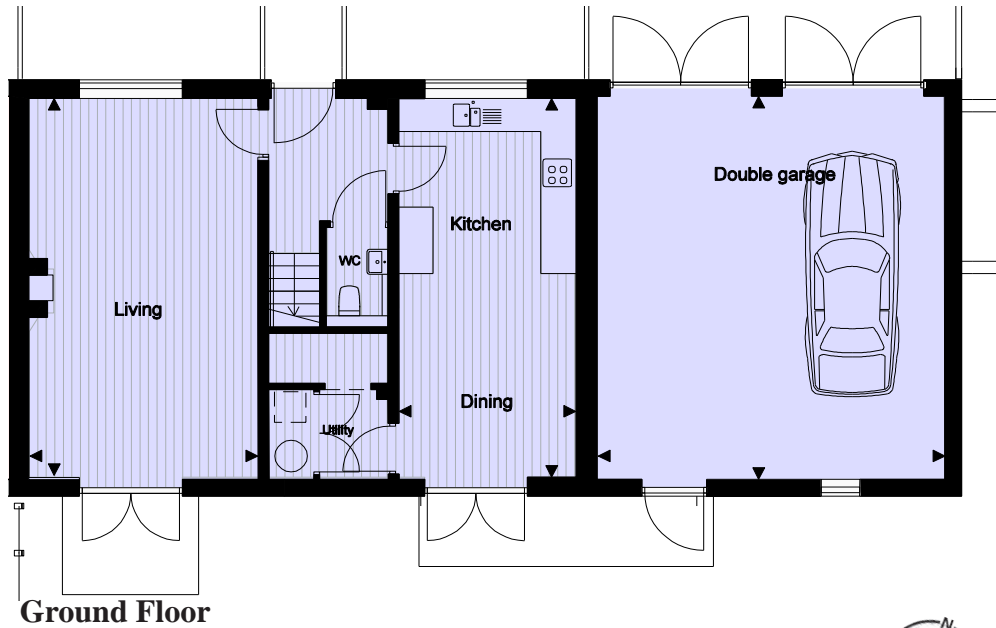


Area: 102.3sqm 1,101 sqft (excluding garage)

Room dimensions

Living/ Dining/Kitchen	7.35x6.63	24' 1"x21' 9"
Utility	1.83x1.80	6' 0"x5' 11"
Bed 1	5.73x3.43	18' 10"x11' 3"
Bed 2	3.96x3.70	12' 12"x12' 2"
Garage	6.63x3.02	21' 9"x9' 11"

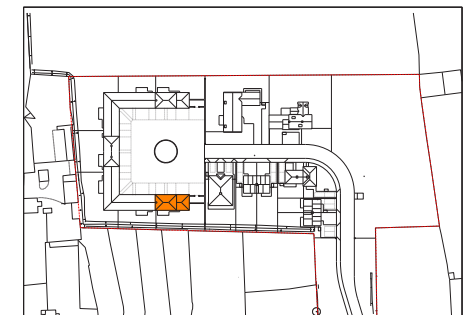




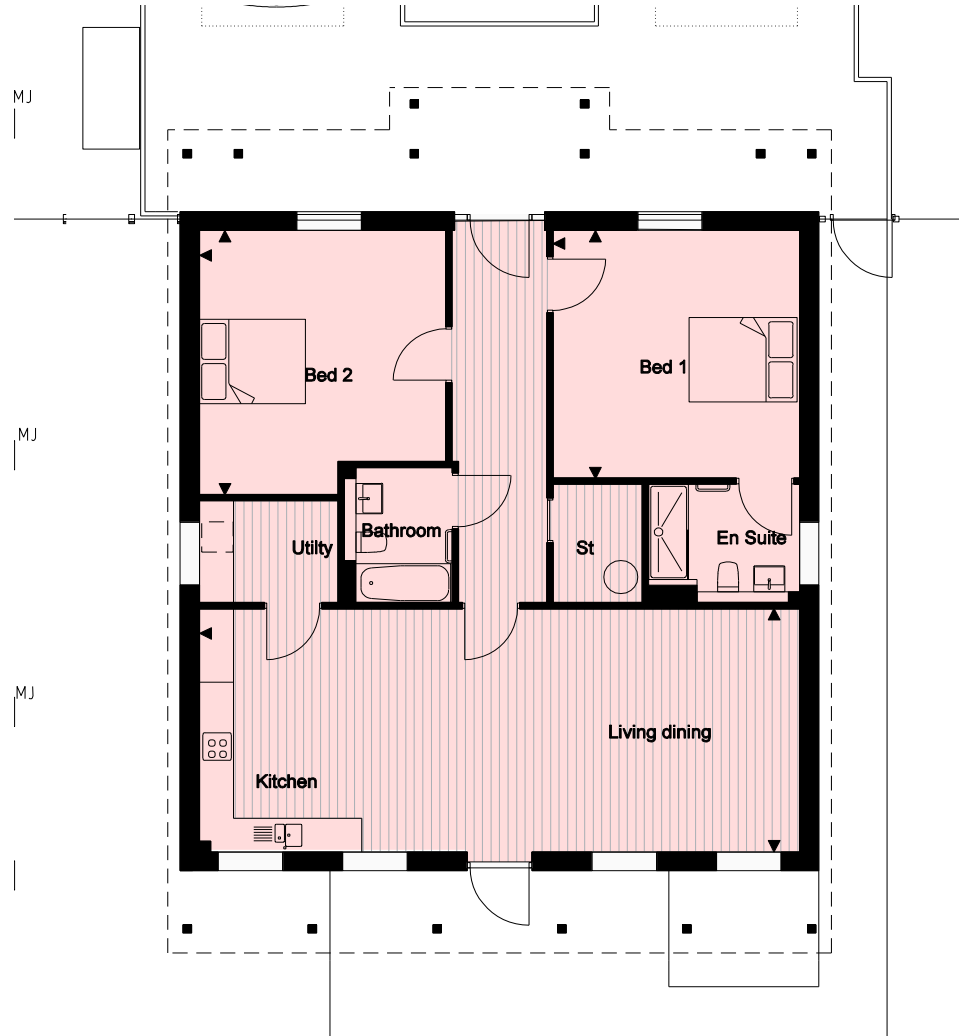
Area: 130.2 sqm 1,401 sqft (excluding garage)

Room dimensions

Living Room	6.74x4.11	22' 1"x13' 6"
Dining/Kitchen	6.74x3.15	22' 1"x10' 4"
Bed 1	4.11x3.59	13' 6"x11' 9"
Bed 2	3.54x3.24	11' 7"x10' 8"
Bed 3	4.02x3.04	13' 2"x10' 0"
Bed 4	3.09x2.66	10' 2"x8' 9"
Garage	6.92x6.12	22' 8"x20' 1"



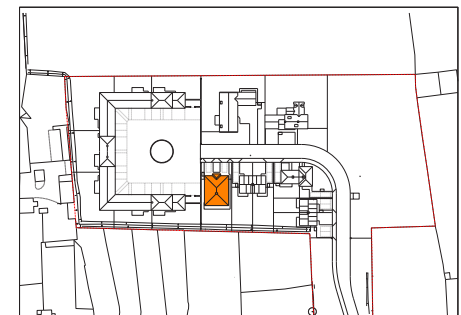
NO 7



Area: 119.2 sqm 1,283 sqft

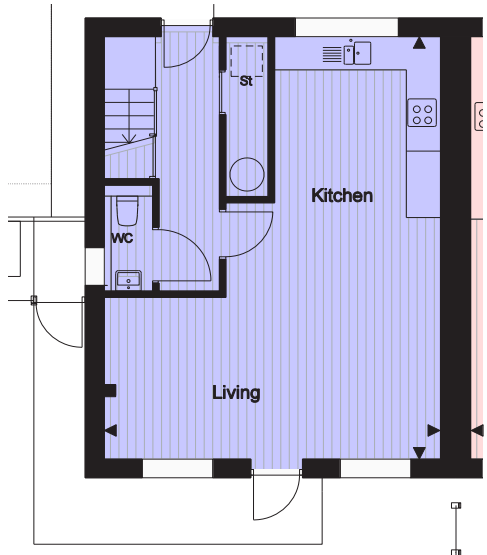
Room dimensions

Living/ Dining/Kitchen	10.45x4.35	34' 3"x14' 3"
Utility	2.40x1.85	7"10"x6' 1"
Bed 1	4.38x4.28	14' 4"x14' 1"
Bed 2	4.73x4.28	15' 6"x14' 1"

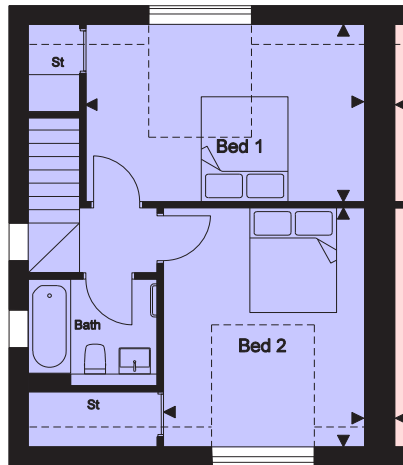




No 6



Ground Floor



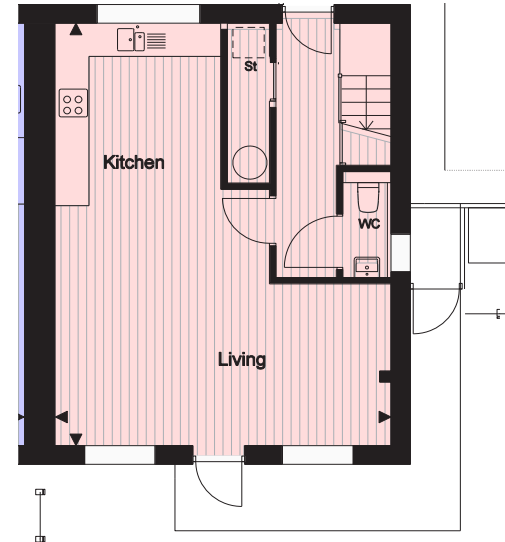
First floor

Area: 89.3 sqm 961 sqft
(1.5 sq.m 16 sq.ft under 1.5m)

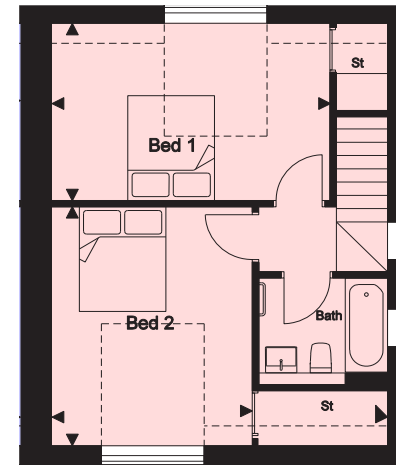
Room dimensions

Living/ Dining/Kitchen	7.52x65.91	24'8"x19'5"
Bed 1	4.91x3.21	16'1"x10'6"
Bed 2	4.21x3.53	13'10"x11'7"

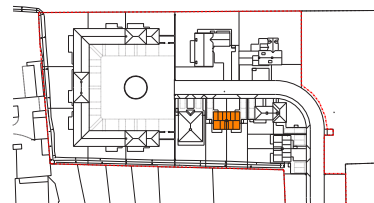
No 5



Ground Floor



First floor

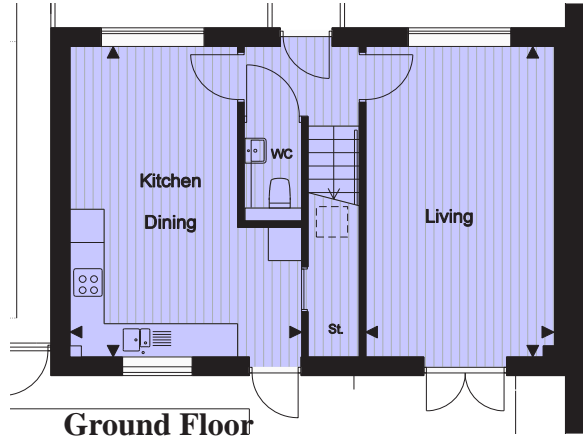


Area: 89.3 sqm 961 sqft
(1.5sqm 16 sq.ft under 1.5m)

Room dimensions

Living/ Dining/Kitchen	7.52x65.91	24'8"x19'5"
Bed 1	4.91x3.21	16'1"x10'6"
Bed 2	4.21x3.53	13'10"x11'7"

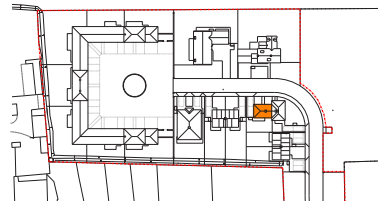
No 4



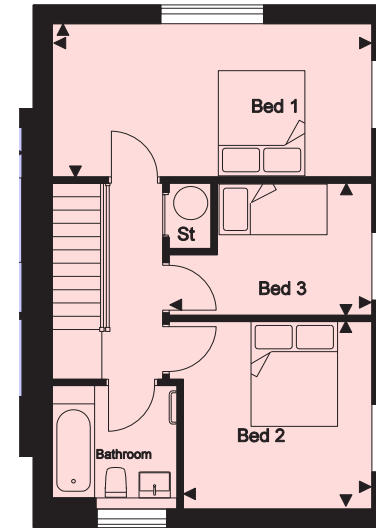
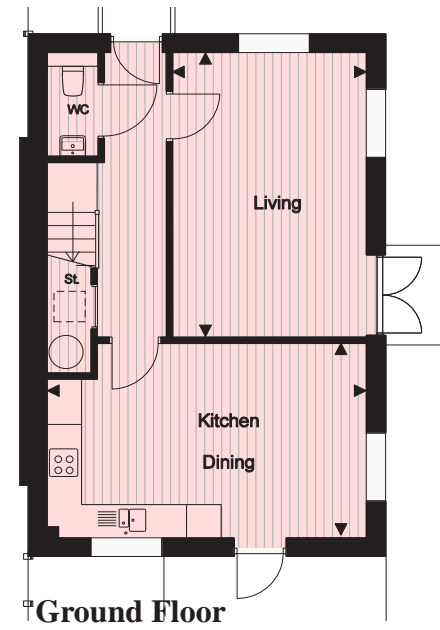
Area: 96.1sqm 1,034 sqft

Room dimensions

Living Room	5.50x3.62	18'1"x11'11"
Dining/Kitchen	5.50x4.03	18'1"x13'3"
Bed 1	3.36x3.33	11'0"x10'11"
Bed 2	4.09x2.76	13'5"x 9' 1"
Bed 3	2.89x2.75	9'6"x9'0"



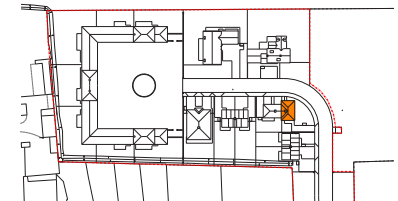
No 3



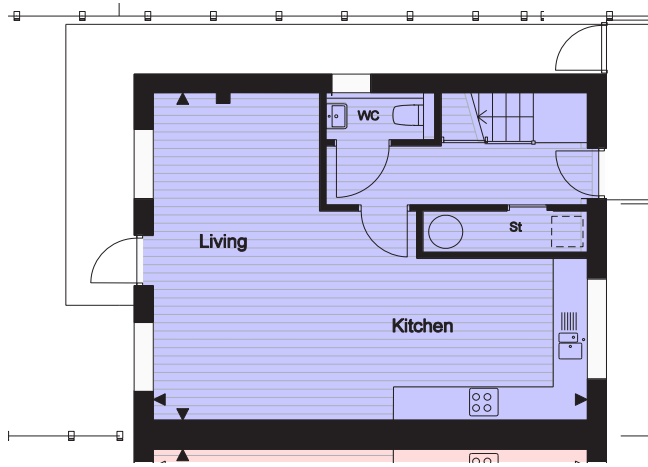
Area: 98.9 sqm 1,065 sqft

Room dimensions

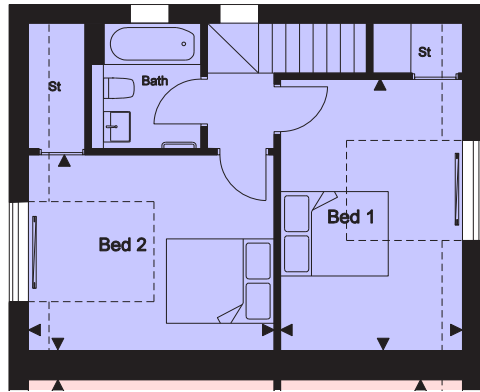
Living Room	5.10x3.21	16'9"x10'6"
Dining/Kitchen	5.61x3.46	18'5"x11'4"
Bed 1	5.61x2.78	18'5"x9'1"
Bed 2	3.44x3.32	11'3"x10'11"
Bed 3	3.57x2.34	11'9"x7'8"



No 2



Ground Floor



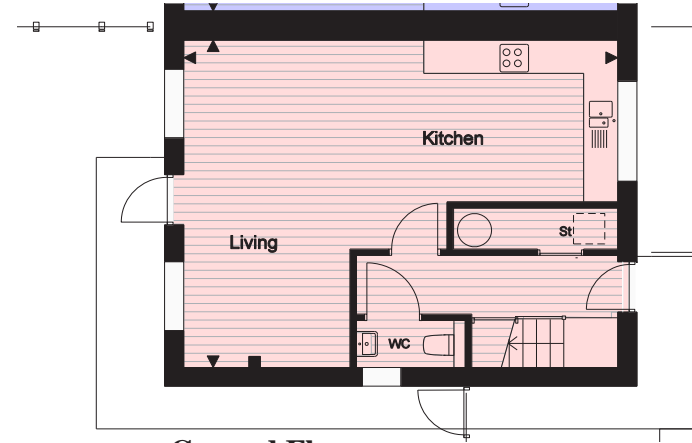
First floor

Area: 89.3 sqm 961 sqft
(1,5 sq.m 16 ss.ft under 1,5m)

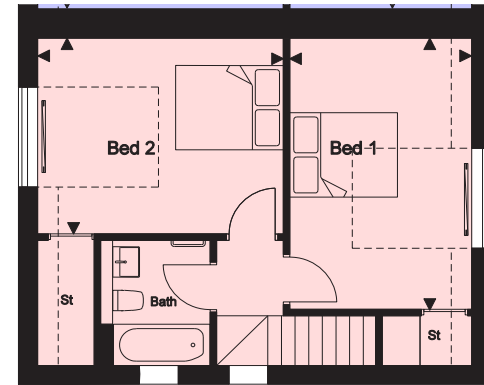
Room dimensions

Living/ Dining/Kitchen	7.52x65.91	24'8"x19'5"
Bed 1	4.91x3.21	16'1"x10'6"
Bed 2	4.21x3.53	13'10"x11'7"

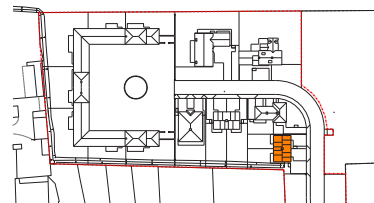
No 1



Ground Floor



First floor



Area: 89.3 sqm 961 sqft
(1,5 sq.m 16 ss.ft under 1,5m)

Room dimensions

Living/ Dining/Kitchen	7.52x65.91	24'8"x19'5"
Bed 1	4.91x3.21	16'1"x10'6"
Bed 2	4.21x3.53	13'10"x11'7"

SITE PLAN WITH GROUND FLOOR



SPECIFICATION

KITCHEN & UTILITY

- Shaker style painted doors to cabinets with soft closing drawers. Manufactured in the UK. Choice of colours for off plan purchasers
- Selection of wall cupboards with integral LED lighting under.
- Choice of colours for off plan purchasers:
- 20mm quartz worktops with matching 100mm upstand and splashback to hob (Nos 7 to 16)
- Laminate faced worktops to Nos 1-6 with matching 100mm upstand and to utility rooms.(Glass splashback to hob)
- 1&1/2 bowl under slung stainless steel sink with monoblock tap (integrated drainer for 1-6)
- Selected utility rooms to have stainless steel sink and drainer and tap.
- Bosch integrated multi-function electric fan oven.
- Bosch integrated 44litre 900W combi-microwave.
- Bosch 4 ring touch control hob.
- Bosch silver metallic extractor hood with integral light.
- Bosch integrated full height fridge/freezer.
- Bosch integrated 12 place integrated dishwasher.

BATHROOMS & EN-SUITES

- Contemporary white Roca sanitaryware.
- 2 drawer vanity units under ensuite and bathroom basins
- Chrome plated Vado brassware.
- Over-bath shower with clear screen to bathrooms.
- Frameless glass screen to low profile shower with rainshower and hand shower to all en-suites
- Chrome plated heated towel rails.(White to 1 to 6)
- Basin mirrors with integrated light.
- Porcelanosa large format ceramic floor tiling to bathroms and ensuites
- Porcelanosa large format ceramic wall tiling to 2100mm above floor to showers and baths.
- Tiled backing to WC and basin ducts with quartz top to bed 1 ensuites
- Tiled splashbacks to basins

INTERNAL FINISHES

- Brushed chrome effect window and door ironmongery.
- Porcelanosa wood effect vinyl strip floor to entrance halls, living/dining rooms,kitchens, cloakrooms and utility rooms.
- Manx Tomkinson 80/20 wool mix 40oz broadloom carpet to bedrooms and stairs.
- Oak veneered feature doors to rooms . White painted doors to stores
- Choice of wall colours for off plan purchasers.

ELECTRICAL FITTINGS

- Contemporary white plastic switches and sockets throughout with USB ports to key locations.
- Pendant lights with wall light points to living rooms and bed 1
- External lighting to front door and rear terraces.
- Inset downlights to kitchens, bathrooms and ensuites
- Digital TV aerial sockets and cabling.
- Data points provided to living areas and bedroom 1.
- Capped off electrics for car charging point

SERVICES

- High efficiency air source heat pump heating and hot water
- Underfloor heating to ground floors.
- Contemporary flat panel radiators to upper floors.
- Utility/store rooms plumbed for washing machines

SECURITY & PEACE OF MIND

- Mains-powered smoke alarms.
- Multipoint locking front door.
- 10-year warranty cover.
- Private estate road

OTHER

- All properties freehold with shared private estate road
- Paved terrace to rear of all properties



FAIRFIELDS SCHEDULE OF UNITS

	TYPE	BEDS	Bath	Parking	Dwelling		Garage	
					sq.m	sq.ft	sq.m	sq.ft.
16	House	5	4	Double garage + front drive	245.6	2,644	34.5	371
15	House	4	3	Double car port + front drive	255.3	2,748	32.3	348
14	House	4	2	Double garage + 2 parking spaces	130.2	1,401	42.4	456
13	Bungalow	2	2	Single garage + parking space	101.9	1,097	20.3	219
12	Bungalow	2	2	Single garage+ parking space	103.5	1,114	20.9	225
11	House	4	3	Single garage + store+ 2 parking spaces	200.4	2,157	20.5	222
10	Bungalow	2	2	Single garage + parking space	102.9	1,108	20.4	220
9	Bungalow	2	2	Single garage + parking space	102.3	1,101	20.3	219
8	House	4	2	Double garage +2 parking spaces	130.2	1,401	42.4	456
7	Bungalow	2	2	2 parking spaces	119.2	1,283	-	-
6	House	2	1	2 parking spaces	89.3	961	-	-
5	House	2	1	2 parking spaces	89.3	961	-	-
4	House	3	1	2 parking spaces	96.1	1,034	-	-
3	House	3	1	2 parking spaces	98.9	1,065	-	-
2	House	2	1	2 parking spaces	89.2	961	-	-
1	House	2	1	2 parking spaces	89.2	961	-	-

*Creating a new development is not just about construction,
it is about the art of good place making.*

The Fairhaven Trust have partnered with Highland to deliver this high quality and exclusive development

Highland is an experienced developer of award winning prime residential developments, providing London style, quality and sophisticated specification in vibrant commuter locations in and around East Anglia. They have delivered an extensive portfolio of properties in Newmarket, Bury St Edmunds and Cambridge.

Highland focus on location, design, the selection of high quality materials and the delivery of an outstanding specification. It is not just about building homes, but creating lifestyles. Highland utilise a mix of traditional and modern to suit the location and context.

A key factor in Highland's developments and properties is that of location. This includes surrounding areas and site settings as well as individual views for the properties. This is excellently demonstrated at The Severals, Newmarket, which overlooks the training grounds, and The Belvedere, whose residents have an expansive view over the city of Cambridge.

Our mission is simple: using imagination and inspiration to create exceptional developments which not only provide superb living accommodation, but also complement their locations, enhancing the landscapes and communities that surround them.



HIGHLAND

FAIRFIELDS

This brochure and the information contained in it does not form part of any contract, and while reasonable effort has been made to ensure accuracy, this cannot be guaranteed and no representation or warranty is made in that regard. Development and house designs and layouts are indicative only and may change. The specification of the houses is the anticipated specification at the date this brochure was prepared, but may be subject to change in accordance with permitted variances under the sale contracts. Dimensions shown in any text or plan are approximate sizes only and actual sizes may be different once constructed (although it is not anticipated that they will be reduced by more than 5% in size). Computer Generated Images and photos are indicative only and may have been enhanced. Photos, images, drawings and perspectives contained in this brochure may not relate to the development and may not accurately reflect the completed development. All sales remain subject to contract. Wall, ceiling and floor finishes, furniture and lighting shown in Computer Generated Images and photos are not included in sales and layouts may differ. Neither the agents nor any person in their employ has any authority to make or give any representation, warranty or guarantee (whether written or oral) in respect of or in relation to the development (or any parts thereof). We strongly recommend all parties visit and inspect the development site to understand its surrounding areas and environment.